



# TIMBER TECHNOLOGIES LLC

106 BREMER AVENUE  
COLFAX, WISCONSIN 54730  
715 962 4242

Date: 1/30/12

To our valued customers,

Due to increased customer request Timber Technologies will begin to offer 3ply 2x6, 3ply 2x8, 4ply 2x6 and 4ply 2x8 columns 14' – 24' with Rafter Ready **all plies** as standard. This means there will be no glue between any of the plies on these stocking items for 24 inches. In the past we have offered these items as Rafter Ready one ply as the standard. This change will allow for easier attachment of multiple ply trusses and more options for setting the columns in the field.

Fully glued and special Rafter Ready columns will still be available upon request.

See attached drawing for recommended truss attachment or check out the website or call for more information.

[www.timber-technologies.com](http://www.timber-technologies.com)

Toll Free: 1-866-727-5625

Please Note: The suggested attachment is a recommendation only! All truss and rafter attachments should be reviewed by project engineer of record.

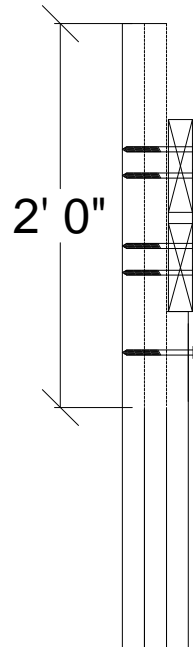
Thank you for your business.

Best regards,

Sales and Support Department  
Timber Technologies, llc

# CONNECTION CONSIDERATIONS FOR RAFTER READY TITAN TIMBERS

NAILS, LAG BOLTS, OR STRUCTURAL SCREWS FOR TRUSS TO COLUMN CONNECTION SHOULD REACH INTO ALL MEMBERS OF COLUMN.

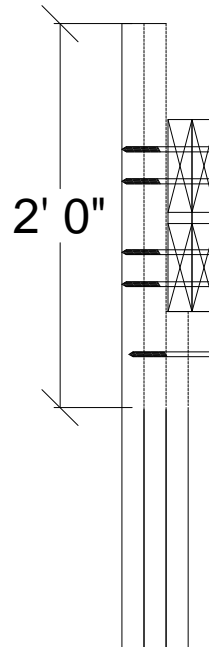


DUE TO WIDTH OF TRUSSES WITH MULTIPLE HEEL PLATES, TRUSSES CAN OVERHANG LAMINATED COLUMNS. OVERHANG VARIES BY EXACT THICKNESS OF TRUSS HEEL.

ANY RAFTER READY (UNGLUED) PORTION OF TIMBER THAT REMAINS BELOW TRUSS MUST BE CONNECTED WITH NAILS, LAGS, STRUCTURAL SCREWS, OR THROUGH BOLTS AS SPECIFIED BY BUILDING DESIGNER.

BUILDING DESIGNER / ENGINEER MAY CALL OUT FASTENERS FROM BOTH SIDES OF COLUMN IN CERTAIN INSTANCES.

TITAN TIMBERS = 1-3/8" PLY THICKNESS

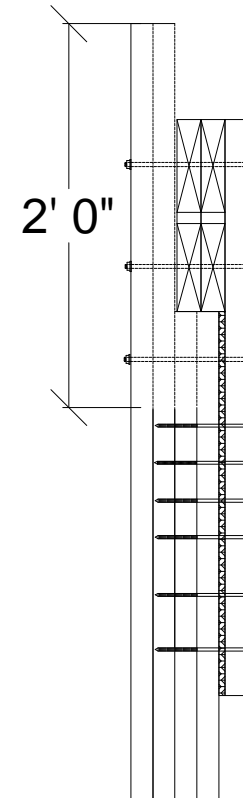


DUE TO WIDTH OF TRUSSES WITH MULTIPLE HEEL PLATES, TRUSSES CAN OVERHANG LAMINATED COLUMNS. OVERHANG VARIES BY EXACT THICKNESS OF TRUSS HEEL.

ANY RAFTER READY (UNGLUED) PORTION OF TIMBER THAT REMAINS BELOW TRUSS MUST BE CONNECTED WITH NAILS, LAGS, STRUCTURAL SCREWS, OR THROUGH BOLTS AS SPECIFIED BY BUILDING DESIGNER.

BUILDING DESIGNER / ENGINEER MAY CALL OUT FASTENERS FROM BOTH SIDES OF COLUMN IN CERTAIN INSTANCES.

TITAN TIMBERS = 1-3/8" PLY THICKNESS




2 PLY TRUSSES MAY REQUIRE A SCAB MEMBER ON OPPOSITE SIDE. SHIM MATERIALS REQ'D TO FLUSH OUT SCAB MEMBER.

FINAL DESIGN BY BUILDING DESIGNER / ENGINEER.

TITAN TIMBERS = 1-3/8" PLY THICKNESS

FASTENER SIZE AND QTY. SHOULD BE SPECIFIED BY BUILDING DESIGNER / ENGINEER TO ENSURE THAT ALL APPLICABLE LOADS ARE ACCOUNTED FOR.

	 <b>TIMBER TECHNOLOGIES LLC</b> 106 BREMER AVENUE COLFAX, WISCONSIN 54730 715 962 4242
DATE:	
1/25/12	6303 COUNTY HWY X (715) 829-5416 (CELL/OFFICE) CHIPPewa FALLS, WI acorn@twt.net